

STROKE ALERT AT UF HEALTH SHANDS HOSPITAL

UF Health Shands Comprehensive Stroke Center

UF Health ShandsCair or county or city emergency medical services personnel will notify the UF Health Shands E.R. that they are en route with a person who is having stroke symptoms. At that time, a stroke alert is issued.

HERE'S HOW WE MOBILIZE: A critical care team of nurses and physicians in the E.R. prepares for the patient's arrival. This team includes critical care nurses, attending and resident physicians, fellows, radiologists, pharmacists and technicians.

9-1-1



UF Health ShandsCair or EMS responds to a call for help, transports the patient to the UF Health Shands E.R. and issues a stroke alert.



E.R. nurses and doctors mobilize and prepare for the patient's arrival.



Door to E.R. MD at bedside:
< 10 minutes



Stroke team physician or physician assistant heads to the E.R. to await patient's arrival.



Door to stroke neurologist at bedside:
< 15 minutes



STAT

Members of the STAT nursing team will report to the E.R. for stroke alerts to assist with the patient's care.



The patient's blood is drawn and sent to the inpatient laboratory for testing.



Door to imaging and labs ordered:
< 10 minutes



A CT scan is performed to determine the type of stroke and formulate a treatment plan.



Door to CT completed:
< 25 minutes



Door to CT interpretation:
< 45 minutes



Rx

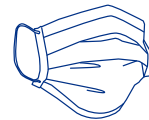
A treatment protocol is put into place based on lab results and the CT scan. Patient may be given IV tPA or may be a candidate for an endovascular procedure, or MER.



Door to labs resulted:
< 45 minutes



DOOR TO IV TPA ADMINISTRATION:
< 45 MINUTES IS THE NEW GOAL



If patient is a candidate for MER, he or she will be moved to the interventional radiology suite where a cerebrovascular/endovascular neurosurgeon will remove the blood clot in the brain.



After receiving treatment, the patient is transported to the neuro-intensive care unit, one of the largest and most sophisticated in the state.



After intensive care, patients may step down to the neuromedicine recovery unit.



The UF Health Shands Comprehensive Stroke Center program coordinators review processes of care for every stroke patient. They collect data for quality review and continuously look for process improvement opportunities.

**Time frames referenced above are suggested guidelines from the American Stroke Association. Care teams at UF Health aim to meet these guidelines with every stroke patient.*

UF Health ShandsCair Dispatch: 1.800.342.5365

UF Health Shands Transfer Center: 1.800.X.TRANSFER (1.800.987.2673)

UFHealth
UNIVERSITY OF FLORIDA HEALTH

**UF HEALTH SHANDS
COMPREHENSIVE STROKE CENTER**

stroke.UFHealth.org • neurosurgery.ufl.edu

Nationally certified by The Joint Commission, the American Stroke Association and the American Heart Association.

BY THE NUMBERS

UF Health Shands Comprehensive Stroke Center



Average number of patients referred to UF Health from surrounding community hospitals each year.

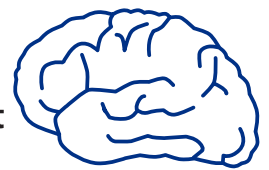
2

Percent of U.S. hospitals with national comprehensive stroke center certification from The Joint Commission. UF Health is one of them.



30

Number of patients at any given time who benefit from our dedicated, 30-bed Neuro ICU unit — one of the largest in the state — with private rooms and full monitoring capabilities.



8

Number of highly trained and subspecialty board-certified physicians, including vascular neurologists and cerebrovascular/endovascular neurosurgeons, on call 24/7 to provide state-of-the-art care.



40

Number of beds staffed by expert physiatrists, therapists, nurses and case managers at UF Health Shands Rehab Hospital.



UF Health ShandsCair Dispatch: 1.800.342.5365

UF Health Shands Transfer Center: 1.800.X.TRANSFER (1.800.987.2673)



**UF HEALTH SHANDS
COMPREHENSIVE STROKE CENTER**

stroke.UFHealth.org • neurosurgery.ufl.edu

Nationally certified by The Joint Commission, the American Stroke Association and the American Heart Association.